



SHL-603H

(1D Wireless Laser Handheld Barcode Scanner)



Technical Parameters	
Wireless Specifications	
Communications	433
Communication Frequency	433-440MHz
Transmission Range	≤100M (In empty area 100M)
Data rate	10Kbps
Memory	100, 000@13Byte barcode
Battery capacity	2000mAh (Lithium battery)
Charging time	6H
The life time of the full charge	6h (continuous reading situation) 12h (Manual reading situation) More than 15 days (Stand-by time)
Communication mode	Read-time mode/Inventory mode / Cache mode

Electrical Characteristics	
Interface	RS-232/USB HID KEYBOARD/USB VCP
Voltage requirement	DC 5V±10%
Current consumption	Max:110mA Min: 50mA
Optical Characteristics	
light source	650nm visible laser diode
Performance Characteristics	
Scan Rate:	100 scans/second± 20 scans/second
Decode angle	Pitch angle:±35° Skew angle:±75° Tilt angle:±40°
curvature	R≥15 mm (EAN8), R≥20 mm (EAN13) (resolution=0.26mm, PCS=0.9)
Min resolution	SR: 0.127 / 5mil (PCS 0.9) HD: 0.08 / 3.2mil (PCS 0.9)
Min .PCS value	> 20%UPC/EAN 13 (13mil)
Language	multiple languages
Identification	EAN13, EAN8, UPC A, UPC E, CODABAR (NW-7), CODE 39, CODE 93, INTERLEAVED 2OF5, STANDARD 2OF5, MATRIX 2OF5, CODE 128, EAN/UCC 128, CODE 11, CHINESE POST
Physical Characteristics	
Dimensions	Scanner: 70mm*95mm*168mm(L*W*H) Base: 145mm*112mm*74mm(L*W*H)
Weight	scanner: 186g Receiver: 188g
Environmental Characteristics	

Temp	-20°-65°C / -4°至 149°F((operation)) -30°- 70°C /-22°至 158°F(storage)
Humidity	5 - 90% (operation)) 5 - 90% (storage)
Ambient Light:	fluorescent light 4000 lx max , direct sun light 80,000 lx max ,white light 4000 lx max
Shock drop test	1.5m drop onto concrete surface
MBTF	30,000 hours except laser diode(10.000 hours)and except mirror scan unit(10,000 hours)
Regulatory	
Laser Safety	JIS-C-6802 Class 2
Electrical Safety	UL 60950, EN/IEC 60950
EMI/RFI	FCC Part 15 Class B,EN 55024/CISPR 22
Environmental	RoHS

Depth of field

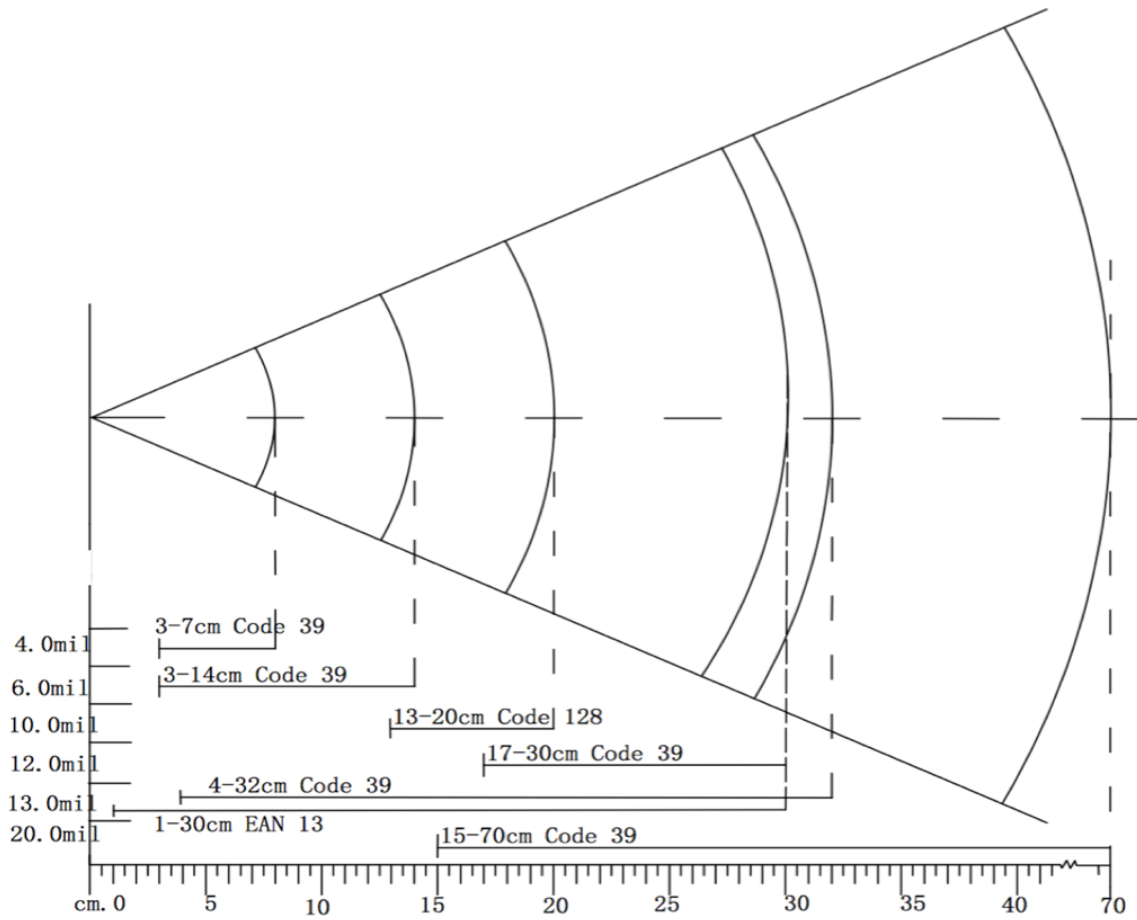


图 1 SR 景深表图

Symbology	Resolution (mm)	Depth of field (mm)
Code 39	4mil	3-7cm
Code 39	6mil	3-14cm
Code 39	10mil	13-20cm
Code 39	12mil	17-30cm
EAN 13	13mil	1-30cm
Code 39	20mil	15-70cm